



230 Ashland Pl
Capital Campaign

Opportunities for Recognition & Tribute



Facade of 230 Ashland, Brooklyn, New York

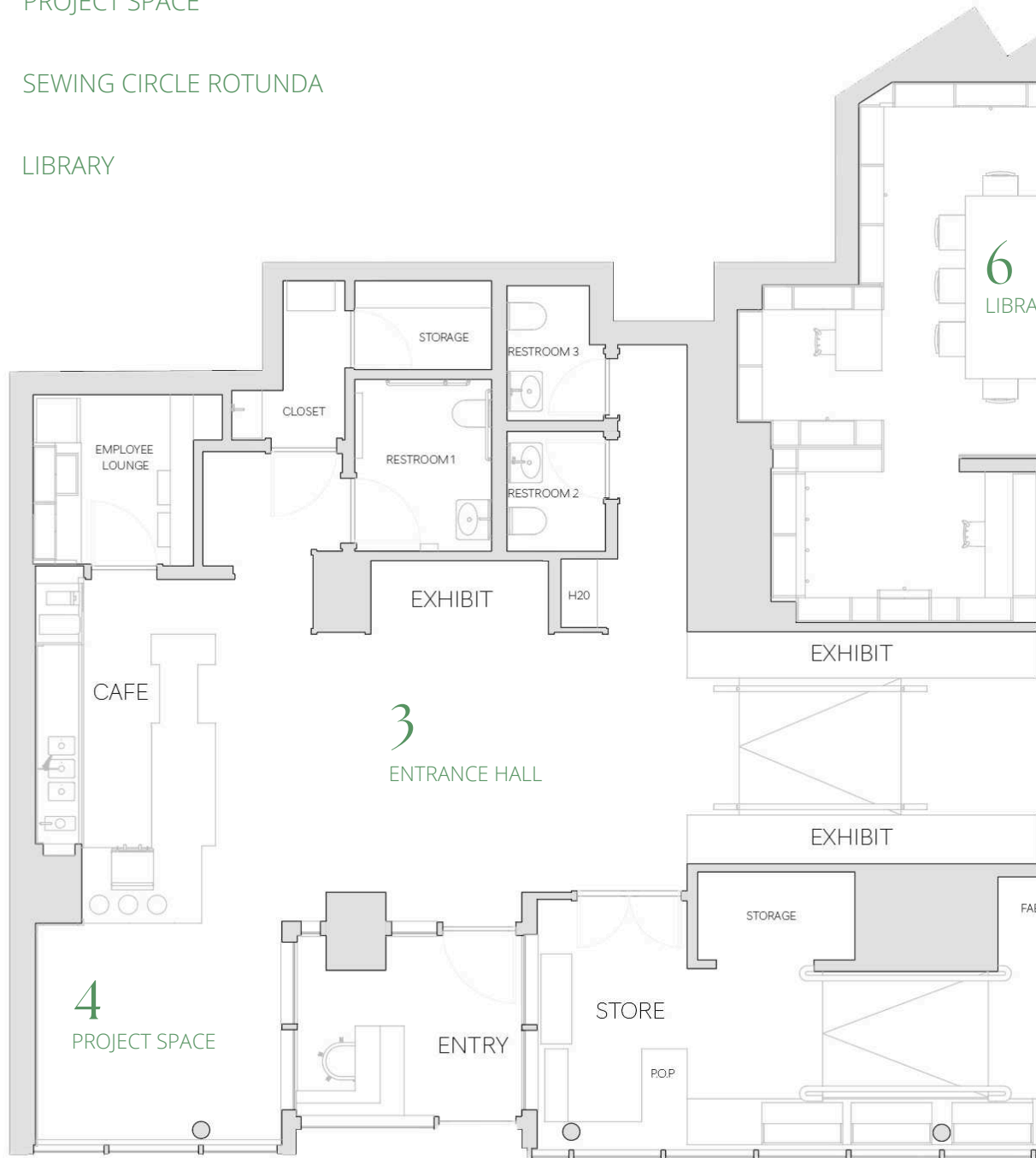
TATTER is engaged in an ambitious and transformational capital effort to build out a flagship home in downtown Brooklyn's Cultural District. This \$5M project, with anchor funding from the New York State Council on the Arts, will create NYC's first and only museum, research center, education space, and community gathering hub dedicated to the textile arts.

Slated to open in 2026, TATTER's new home will house new and enhanced offerings—making our singular collection of books and objects more accessible to the public; enabling exhibitions featuring the work of contemporary and historic textile artists; and increasing learning opportunities to meet the demand for hand-based skills classes and community engagement.

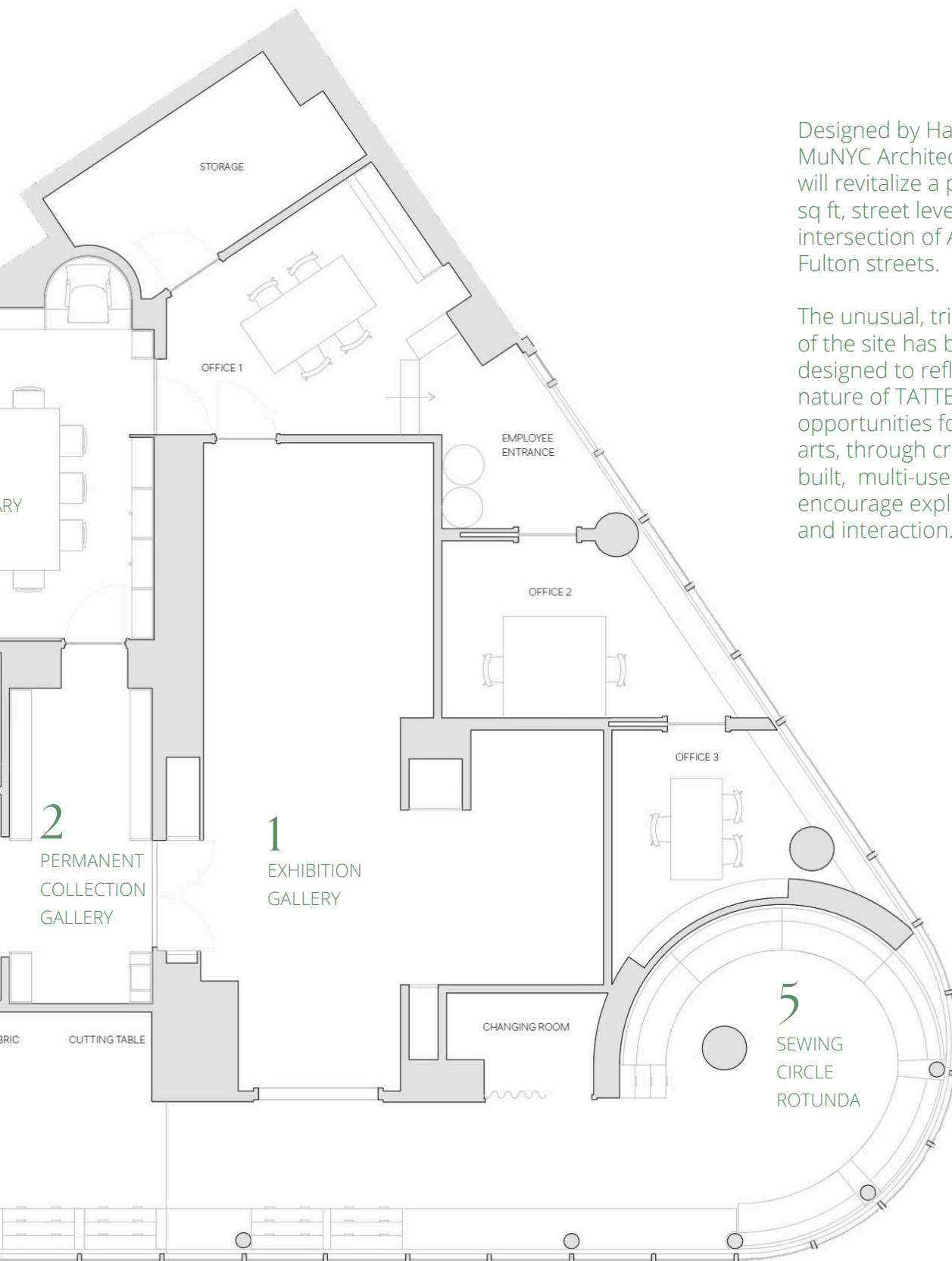
TATTER

Overview

- 1 EXHIBITION GALLERY
- 2 PERMANENT COLLECTION GALLERY
- 3 ENTRANCE HALL
- 4 PROJECT SPACE
- 5 SEWING CIRCLE ROTUNDA
- 6 LIBRARY



TATTER



Designed by Hanlin Design and MuNYC Architecture, the project will revitalize a prominent 3,500 sq ft, street level space at the intersection of Ashland and Fulton streets.

The unusual, triangular footprint of the site has been imaginatively designed to reflect the hybrid nature of TATTER and maximize opportunities for viewing textile arts, through creating purpose built, multi-use spaces that encourage exploration, learning, and interaction.

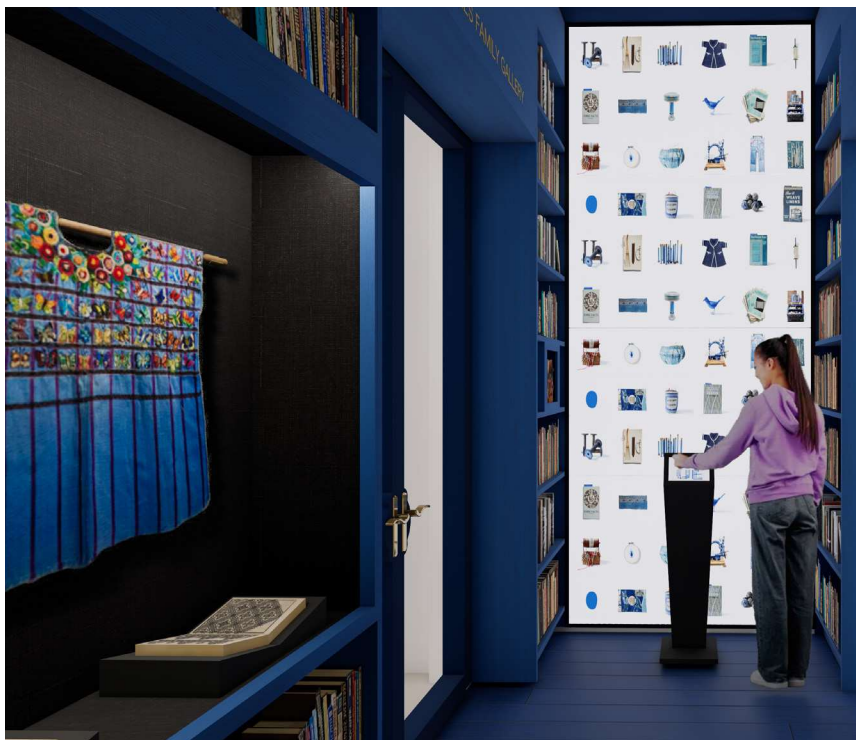
Naming Opportunities



1 Exhibition Gallery \$500,000

Envisioned as the heart of 230 Ashland Place, TATTER's main gallery and largest space hosts rotating exhibitions of contemporary and historic U.S. and global textiles and fine art. The 500 sq ft, flexible gallery features state of the art lighting and 10 ft fixed and moveable walls, enabling a broad range of thematic group and individual artist retrospectives, as well as a space for events, lectures, and community gathering.

TATTER



2

Permanent Collection Gallery

\$250,000

Designed to showcase TATTER's extraordinary collection of over 10,000 books, periodicals, and exhibition catalogs, and 4,000 artifacts that reflect the global history, traditions, makers, craft, and beauty of textiles. This gallery is outfitted with custom floor to ceiling glass display vitrines, as well as a searchable, interactive, digital display of TATTER's archives.

Naming Opportunities



3 Entrance Hall \$150,000

In keeping with TATTER's mission of community access, the Entrance Hall is the welcoming embrace for all TATTER visitors, inviting the public in to explore and enjoy 230 Ashland Place. A large work of textile art directly faces the entrance doors, setting the tone for the visitor experience. The expansive Entrance Hall opens up to all areas of the space, including a vitrined ramp leading to the library and galleries, which serves as a prominently lit space for exhibiting art.

TATTER



4 Project Space

\$150,000

Located off the Entrance Hall, the inviting and intimate Project Space features curated, rotating installations of contemporary textile artists and space for small classes and workshops. Featuring emerging voices on the vanguard of textile arts and embodying TATTER's commitment to textile activism, the Project Space has its pulse on the here and now. With floor to ceiling windows abutting the BAM Harvey Theater, the Project Space is TATTER's most publicly visible space.

Naming Opportunities



5 Sewing Circle Rotunda

\$25,000

10 available

Located at the corner of Ashland and Fulton, the enclosed rotunda includes space for classes and workshops, as well as exhibitions and site specific art commissions. With seating arranged in a circular formation, the Rotunda's architecture evokes the meaningful history of the sewing circle, where textile making was traditionally collaborative, intimate, and multi-generational. With its fully glassed-in walls, the Sewing Circle Rotunda departs from the classically private sewing circle, placing it on a celebratory stage viewable from all of Brooklyn's Cultural District.

TATTER



6

Grancestor Library Campaign

\$10,000

per shelf

Each shelf in TATTER's new Blue Library will be named, providing a unique way to permanently honor donors' ancestors with a relationship to the textile arts. For more information, please see the Grancestor Campaign materials.

TATTER explores cloth
to tell human stories and
cultivate understanding.

TATTER